



# Animation Boss

Online Animation, Gaming VFX News



## Latest News



[Latest](#) [Trailer](#)

## Wonder Woman 1984 Official Trailer

📅 August 22, 2020 👤

admin 💬 0

Warner Bros. Pictures released Official Trailer for Wonder Woman 1984, the upcoming sequel to Wonder Woman. Movie will be release on October

Share this:



Tutorial

## Adobe Photoshop CC Keyboard Shortcuts

📅 March 25, 2018 👤 admin

Adobe Photoshop CC Keyboard Shortcuts will help you to work faster & become more productive while using Adobe Photoshop CC.





**ADOBE PHOTOSHOP CC**  
KEYBOARD SHORTCUTS CHEAT SHEET

The cheat sheet displays a keyboard layout with various Photoshop tools and shortcuts. Below the keyboard are three tables of shortcuts for different tools.

Tools SHORTCUTS	Apple	Windows
Move tool	V	V
Rectangular Marquee tool	M	M
Elliptical Marquee tool	M	M
Lasso tool	L	L
Polygonal Lasso tool	L	L
Magnetic Lasso tool	L	L
Magic Wand tool	W	W
Quick Selection tool	W	W
Crop tool	C	C
Slice tool	C	C
Slice Select tool	C	C
Eyedropper tool	I	I
Color Sampler tool	I	I
Ruler tool	I	I
Note tool	I	I
Count tool	I	I
*Spot Healing Brush tool	J	J
Healing Brush tool	J	J
Patch tool	J	J
Red Eye tool*	J	J
*Brush tool	B	B
Pencil tool	B	B
Color Replacement tool	B	B
Mixer Brush tool*	B	B
*Clone Stamp tool	S	S
Pattern Stamp tool*	S	S

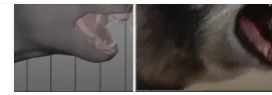
Tools SHORTCUTS	Apple	Windows
History Brush tool	Y	Y
Art History Brush tool*	Y	Y
Eraser tool	E	E
Background Eraser tool	E	E
Magic Eraser tool	E	E
Gradient tool	G	G
Paint Bucket tool	G	G
Dodge tool	O	O
Burn tool	O	O
Sponge tool	O	O
Pen tool	P	P
Freeform Pen tool	P	P
Horizontal Type tool	T	T
Vertical Type tool	T	T
Horizontal Type mask tool	T	T
Vertical Type mask tool	T	T
Path Selection tool	A	A
Direct Selection tool	A	A
Rectangle tool	U	U
Rounded Rectangle tool	U	U
Ellipse tool	U	U
Polygon tool	U	U
Line tool	U	U
Custom Shape tool	U	U

Tools SHORTCUTS	Apple	Windows
3D Object Rotate tool	K	K
3D Object Roll tool	K	K
3D Object Pan tool	K	K
3D Object Slide tool	K	K
3D Object Scale tool	K	K
3D Camera Rotate tool	N	N
3D Camera Roll tool	N	N
3D Camera Pan tool	N	N
3D Camera Walk tool	N	N
3D Camera Zoom	N	N
Hand tool	H	H
Rotate View tool	R	R
Zoom tool	Z	Z

www.animationboss.net

# Popular shortcuts

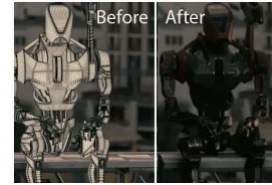
Result	Windows	macOS
Free Transform	Control + T	Command + T
Decrease Brush Size	[	[
Increase Brush Size	]	]
Decrease Brush Hardness	{	{



## Animation-VFX Breakdown

August 2, 2020

Comments Off



## Westworld VFX Breakdown

July 2, 2020



## The Last Kingdom VFX Breakdown

OWN

June 23, 2020

Comments Off



## Disney's Mulan Behind The Scenes

Scenes

June 8, 2020

Comments Off



## Building a Miniature VFX

### Metropolis for Award-Winning SPDRS Spot

April 22, 2020

Comments Off

## Hobbs & Shaw VFX Breakdown





Default Foreground/Background colors	D	D
Switch Foreground/Background colors	X	X
New layer via copy	Control + J	Command + J
New layer via cut	Shift + Control + J	Shift + Command + J
Add to a selection	Any selection tool + Shift-drag	Any selection tool + Shift-drag
Delete brush or swatch	Alt-click brush or swatch	Option-click brush or swatch
Toggle auto-select with move tool	Control-click	Command-click
Cancel any modal dialog window (including the Start Workspace)	Escape	Escape
Select the first edit field of the tool bar	Enter	Return
Navigate between fields	Tab	Tab
Navigate between fields in opposite direction	Tab + Shift	Tab + Shift
Change Cancel to Reset	Alt	Option

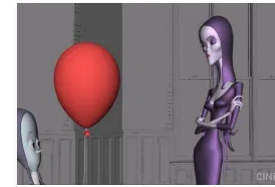
# Use function keys

Note:



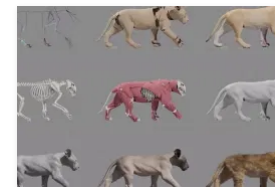
2020  
Comments Off

Comments Off



Behind The Scenes "The Addams Family"

March 27, 2020  
0 Comments



The Lion King VFX Breakdown

August 7, 2019  
0 Comments



Making of Pixar's Animated Movie Toy Story 4

July 28, 2019  
Comments Off



Trust VFX breakdown

July 26, 2019  
Comments Off



Houdini Customer Reel

2019





volume, etc. For more information on the behaviour of function keys on your Mac, refer to these Apple documentations:

- [macOS Sierra: Use keyboard function keys](#)
- [Change the behavior of function keys on your Mac](#)

Result	Windows	macOS
Start Help	F1	Help key
Undo/Redo		F1
Cut	F2	F2
Copy	F3	F3
Paste	F4	F4
Show/Hide Brush panel	F5	F5
Show/Hide Color panel	F6	F6
Show/Hide Layers panel	F7	F7
Show/Hide Info panel	F8	F8
Show/Hide Actions panel	F9	Option + F9
Revert	F12	F12
Fill	Shift + F5	Shift + F5
Feather Selection	Shift + F6	Shift + F6
Inverse Selection	Shift + F7	Shift + F7

## Select tools

Holding down a key temporarily activates a tool. Letting go of the key returns to the previous tool.

Note: In rows with multiple tools, repeatedly press the same shortcut to toggle through the group.



Good Omen's VFX Breakdown

📅 July 24, 2019    💬 Comments Off



"Bruised"

Animated Short Film

📅 July 24, 2019    💬 Comments Off



Upcoming Marvel Movies & TV

Series

📅 July 21, 2019    💬 0



Annabelle Comes Home VFX

Breakdown

📅 July 18, 2019    💬 Comments Off



Catch-22 VFX Breakdown

📅 July

10, 2019    💬 0

Spider-Man: Far From Home VFX Breakdown



Cycle through tools with the same shortcut key	Shift-press shortcut key (if Use Shift Key for Tool Switch preference is selected)	Shift-press shortcut key (if Use Shift Key for Tool Switch preference is selected)
Cycle through hidden tools	Alt-click + tool (except Add Anchor Point, Delete Anchor Point, and Convert Point tools)	Option-click + tool (except Add Anchor Point, Delete Anchor Point, and Convert Point tools)
Move tool	V	V
Rectangular Marquee tool <sup>†</sup>	M	M
Elliptical Marquee tool		
Lasso tool	L	L
Polygonal Lasso tool		
Magnetic Lasso tool		
Magic Wand tool	W	W
Quick Selection tool		
Crop tool	C	C
Slice tool		
Slice Select tool		
Eyedropper tool <sup>†</sup>	I	I
Color Sampler tool		



Comments Off



Maleficent: Mistress of Evil official Trailer  
 July 8, 2019 0



Men in Black: International VFX  
 breakdown  
 July 3, 2019 Comments Off

## Tag

- [Angry Bird Animation](#) Animation
- [Movies Avengers Infinity War](#) Movies
- [Behind the Scenes Blade Runner 2049](#) Behind the Scenes
- [Brainstorm](#) Brainstorm
- [Digital Breakdown CG Commercial](#) Digital Breakdown
- [Dark David Jones Digital District](#) Dark
- [Disney Early Man Faint 2 Fusefx](#) Disney
- [Game of Thrones Game of Thrones 7 GIFsmetHarry Image Engine Jobs](#) Game of Thrones
- [Jumanji Jurassic World Legend 3D Making](#) Jumanji
- [Mersal Milk VFX Minions](#) Mersal
- [MPC Mr. X Netflix nvizible](#) MPC
- [Oscar Rodeo FX Sol VFX](#) Oscar
- [Special Stopmotion Trixter TVC](#) Special

VFX VFX





Note tool		
Spot Healing Brush tool	J	J
Healing Brush tool		
Patch tool		
Red Eye tool		
Brush tool	B	B
Pencil tool		
Color Replacement tool		
Mixer Brush tool		
Clone Stamp tool	S	S
Pattern Stamp tool		
History Brush tool	Y	Y
Art History Brush tool		
Eraser tool†	E	E
Background Eraser tool		
Magic Eraser tool		
Gradient tool	G	G
Paint Bucket tool		
Dodge tool	O	O
Burn tool		
Sponge tool		

## Effects Weta Digital Zoic

### Trending

[Adobe Photoshop CC Keyboard Shortcuts](#)

[Tom and Jerry: How classical Animation were Made](#)

[Joy Story: Animated Short Film by Passion Pictures](#)

[Adobe Animate keyboard shortcuts](#)

[12 Principles of Animation](#)

["Bilby" Animated Short Film](#)

[Avengers: Infinity War VFX Breakdown](#)

[No7 'The Wave' Commercial Breakdown](#)

[Avengers: Endgame VFX Breakdown](#)

["The Little Duck" Disney's Animated Short Film](#)





Freeform Pen tool		
Horizontal Type tool	T	T
Vertical Type tool		
Horizontal Type mask tool		
Vertical Type mask tool		
Path Selection tool	A	A
Direct Selection tool		
Rectangle tool	U	U
Rounded Rectangle tool		
Ellipse tool		
Polygon tool		
Line tool		
Custom Shape tool		
Hand tool <sup>†</sup>	H	H
Rotate View tool	R	R
Zoom tool <sup>†</sup>	Z	Z
Default Foreground/Background colors	D	D
Switch Foreground/Background colors	X	X
Toggle Standard/Quick Mask modes	Q	Q
Content-Aware Move	J	J





Perspective Crop tool	C	C
Artboard tool	V	V
Rotate View tool	R	R
Toggle Preserve Transparency	/ (forward slash)	/ (forward slash)
Decrease Brush Hardness	{	{
Increase Brush Hardness	}	}
Previous Brush	,	,
Next Brush	.	.
First Brush	<	<
Last Brush	>	>
†Use same shortcut key for Liquify		

## View images

This partial list provides shortcuts that don't appear in menu commands or tool tips.

Result	Windows	macOS
Cycle through open documents	Control + Tab	Control + Tab
Switch to previous document	Shift + Control + Tab	Shift + Command + `(grave accent)
Close a file in Photoshop and open Bridge	Shift-Control-W	Shift-Command-W







Quick Mask mode		
Toggle (forward) between Standard screen mode, Full screen mode with menu bar, and Full screen mode	F	F
Toggle (backward) between Standard screen mode, Full screen mode with menu bar, and Full screen mode	Shift + F	Shift + F
Toggle (forward) canvas color	Spacebar + F (or right-click canvas background and select color)	Spacebar + F (or Control-click canvas background and select color)
Toggle (backward) canvas color	Spacebar + Shift + F	Spacebar + Shift + F
Fit image in window	Double-click Hand tool	Double-click Hand tool
Magnify 100%	Double-click Zoom tool or Ctrl + 1	Double-click Zoom tool or Command + 1
Switch to Hand tool (when not in text-edit mode)	Spacebar	Spacebar
Simultaneously pan multiple documents with Hand tool	Shift-drag	Shift-drag





Switch to Zoom Out tool	Alt + spacebar	Option + spacebar
Move Zoom marquee while dragging with the Zoom tool	Spacebar-drag	Spacebar-drag
Apply zoom percentage, and keep zoom percentage box active	Shift + Enter in Navigator panel zoom percentage box	Shift + Return in Navigator panel zoom percentage box
Zoom in on specified area of an image	Control-drag over preview in Navigator panel	Command-drag over preview in Navigator panel
Temporarily zoom into an image	Hold down H and then click in the image and hold down the mouse button	Hold down H and then click in the image and hold down the mouse button
Scroll image with Hand tool	Spacebar-drag, or drag view area box in Navigator panel	Spacebar-drag, or drag view area box in Navigator panel
Scroll up or down 1 screen	Page Up or Page Down <sup>†</sup>	Page Up or Page Down <sup>†</sup>
Scroll up or down 10 units	Shift + Page Up or Page Down <sup>†</sup>	Shift + Page Up or Page Down <sup>†</sup>
Move view to upper-left corner or lower-right corner	Home or End	Home or End
Toggle layer mask on/off as rubylith (layer mask must be selected)	\ (backslash)	\ (backslash)





# Use Puppet Warp

This partial list provides shortcuts that don't appear in menu commands or tool tips.

Result	Windows	macOS
Cancel completely	Esc	Esc
Undo last pin adjustment	Ctrl + Z	Command + Z
Select all pins	Ctrl + A	Command + A
Deselect all pins	Ctrl + D	Command + D
Select multiple pins	Shift-click	Shift-click
Move multiple selected pins	Shift-drag	Shift-drag
Temporarily hide pins	H	H

# Use Refine Edge

Result	Windows	macOS
Open the Refine Edge dialog box	Control + Alt + R	Command + Option + R
Cycle (forward) through preview modes	F	F
Cycle (backward) through preview modes	Shift + F	Shift + F
Toggle between original image and selection preview	X	X
Toggle between original selection and refined version	P	P





Toggle between Refine Radius and Erase Refinements tools

Shift + E

Shift + E

## Use the Filter Gallery

Result	Windows	macOS
Apply a new filter on top of selected	Alt-click a filter	Option-click a filter
Reapply last-used filter	Control + Alt + F	Control + Command + F
Open/close all disclosure triangles	Alt-click a disclosure triangle	Option-click a disclosure triangle
Change Cancel button to Default	Control	Command
Change Cancel button to Reset	Alt	Option
Undo/Redo	Control + Z	Command + Z
Step forward	Control + Shift + Z	Command + Shift + Z
Step backward	Control + Alt + Z	Command + Option + Z

## Use the Liquify filter

Result	Windows	macOS
Forward Warp tool	W	W





Iwirl Clockwise tool	C	C
Pucker tool	S	S
Bloat tool	B	B
Push Left tool	O	O
Mirror tool	M	M
Turbulence tool	T	T
Freeze Mask tool	F	F
Thaw Mask tool	D	D
Reverse direction for Bloat, Pucker, Push Left, and Mirror tools	Alt + tool	Option + tool
Continually sample the distortion	Alt-drag in preview with Reconstruct tool, Displace, Amplitwist, or Affine mode selected	Option-drag in preview with Reconstruct tool, Displace, Amplitwist, or Affine mode selected
Decrease/increase brush size by 2, or density, pressure, rate, or turbulent jitter by 1	Down Arrow/Up Arrow in Brush Size, Density, Pressure, Rate, or Turbulent Jitter text box <sup>†</sup>	Down Arrow/Up Arrow in Brush Size, Density, Pressure, Rate, or Turbulent Jitter text box <sup>†</sup>
Decrease/increase brush size by 2, or density, pressure, rate, or turbulent jitter by 1	Left Arrow/Right Arrow with Brush Size, Density, Pressure, Rate, or Turbulent Jitter slider showing <sup>†</sup>	Left Arrow/Right Arrow with Brush Size, Density, Pressure, Rate, or Turbulent Jitter slider showing <sup>†</sup>





controls on right from top		
Cycle through controls on right from bottom	Shift + Tab	Shift + Tab
Change Cancel to Reset	Alt	Option
†Hold down Shift to decrease/increase by 10		

## Use Vanishing Point

Result	Windows	macOS
Zoom 2x (temporary)	X	X
Zoom in	Control + + (plus)	Command + + (plus)
Zoom out	Control + - (hyphen)	Command + - (hyphen)
Fit in view	Control + 0 (zero), Double-click Hand tool	Command + 0 (zero), Double-click Hand tool
Zoom to center at 100%	Double-click Zoom tool	Double-click Zoom tool
Increase brush size (Brush, Stamp tools)	]	]
Decrease brush size (Brush, Stamp tools)	[	[
Increase brush hardness (Brush, Stamp tools)	Shift + ]	Shift + ]





Stamp tools)		
Undo last action	Control + Z	Command + Z
Redo last action	Control + Shift + Z	Command + Shift + Z
Deselect all	Control + D	Command + D
Hide selection and planes	Control + H	Command + H
Move selection 1 pixel	Arrow keys	Arrow keys
Move selection 10 pixels	Shift + arrow keys	Shift + arrow keys
Copy	Control + C	Command + C
Paste	Control + V	Command + V
Repeat last duplicate and move	Control + Shift + T	Command + Shift + T
Create a floating selection from the current selection	Control + Alt + T	
Fill a selection with image under the pointer	Control-drag	Command-drag
Create a duplicate of the selection as a floating selection	Control + Alt-drag	Command + Option-drag
Constrain selection to a 15° rotation	Alt + Shift to rotate	Option + Shift to rotate
Select a plane under another selected plane	Control-click the plane	Command-click the plane
Create 90 degree plane off parent plane	Control-drag	Command-drag





Make a full canvas plane, square to the camera

Double-click the Create Plane tool

Double-click the Create Plane tool

# Use the Camera Raw dialog box

Note: Holding down a key temporarily activates a tool. Letting go of the key returns to the previous tool.

Result	Windows	macOS
Zoom tool	Z	Z
Hand tool	H	H
White Balance tool	I	I
Color Sampler tool	S	S
Crop tool	C	C
Straighten tool	A	A
Spot Removal tool	B	B
Red Eye Removal tool	E	E
Basic panel	Ctrl + Alt + 1	Command + Option + 1
Tone Curve panel	Ctrl + Alt + 2	Command + Option + 2
Detail panel	Ctrl + Alt + 3	Command + Option + 3
HSL/Grayscale panel	Ctrl + Alt + 4	Command + Option + 4
Split Toning panel	Ctrl + Alt	Command + Option







Lens Corrections panel	Ctrl + Alt + 6	Command + Option + 6
Camera Calibration panel	Ctrl + Alt + 7	Command + Option + 7
Presets panel	Ctrl + Alt + 9	Command + Option + 9 (macOS Universal Access zoom shortcut must be disabled in System Preferences)
Open Snapshots panel	Ctrl + Alt + 9	Command + Option + 9
Parametric Curve Targeted Adjustment tool	Ctrl + Alt + Shift + T	Command + Option + Shift + T
Hue Targeted Adjustment tool	Ctrl + Alt + Shift + H	Command + Option + Shift + H
Saturation Targeted Adjustment tool	Ctrl + Alt + Shift + S	Command + Option + Shift + S
Luminance Targeted Adjustment tool	Ctrl + Alt + Shift + L	Command + Option + Shift + L
Grayscale Mix Targeted Adjustment tool	Ctrl + Alt + Shift + G	Command + Option + Shift + G
Last-used Targeted Adjustment tool	T	T
Adjustment Brush tool	K	K
Graduated Filter tool	G	G
Increase/decrease brush size	] / [	] / [
Increase/decrease brush	Shift + ] /	Shift + ] / Shift + [





Increase/decrease Adjustment Brush tool flow in increments of 10	= (equal sign) / - (hyphen)	= (equal sign) / - (hyphen)
Temporarily switch from Add to Erase mode for the Adjustment Brush tool, or from Erase to Add mode	Alt	Option
Increase/decrease temporary Adjustment Brush tool size	Alt + ] / Alt + [	Option + ] / Option + [
Increase/decrease temporary Adjustment Brush tool feather	Alt + Shift + ] / Alt + Shift + [	Option + Shift + ] / Option + Shift + [
Increase/decrease temporary Adjustment Brush tool flow in increments of 10	Alt + = (equal sign) / Alt + - (hyphen)	Option = (equal sign) / Option + - (hyphen)
Switch to New mode from Add or Erase mode of the Adjustment Brush tool or the Graduated Filter	N	N
Toggle Auto Mask for Adjustment Brush tool	M	M
Toggle Show Mask for Adjustment Brush tool	Y	Y
Toggle pins for Adjustment Brush tool	V	V
Toggle overlay for Graduated Filter, Spot Removal tool, or Red Eye	V	V





Rotate image left	L or Ctrl + ]	L or Command + ]
Rotate image right	R or Ctrl + [	R or Command + [
Zoom in	Ctrl + + (plus)	Command + + (plus)
Zoom out	Ctrl + - (hyphen)	Command + - (hyphen)
Temporarily switch to Zoom In tool  (Doesn't work when Straighten tool is selected. If Crop tool is active, temporarily switches to Straighten tool.)	Ctrl	Command
Temporarily switch to Zoom Out tool and change the Open Image button to Open Copy and the Cancel button to Reset.	Alt	Option
Toggle preview	P	P
Full screen mode	F	F
Temporarily activate the White Balance tool and change the Open Image button to Open Object.  (Does not work if Crop tool is active)	Shift	Shift
Select multiple points in	Click the	Click the first point;





	Shift-click additional points	
Add point to curve in Curves panel	Control-click in preview	Command-click in preview
Move selected point in Curves panel (1 unit)	Arrow keys	Arrow keys
Move selected point in Curves panel (10 units)	Shift-arrow	Shift-arrow
Open selected images in Camera Raw dialog box from Bridge	Ctrl + R	Command + R
Open selected images from Bridge bypassing Camera Raw dialog box	Shift + double-click image	Shift + double-click image
Display highlights that will be clipped in Preview	Alt-drag Exposure, Recovery, or Black sliders	Option-drag Exposure, Recovery, or Black sliders
Highlight clipping warning	O	O
Shadows clipping warning	U	U
(Filmstrip mode) Add 1 – 5 star rating	Ctrl +1 – 5	Command + 1 – 5
(Filmstrip mode) Increase/decrease rating	Ctrl +. (period) / Ctrl+, (comma)	Command + . (period) / Command+, (comma)





label		
(Filmstrip mode) Add yellow label	Ctrl + 7	Command + 7
(Filmstrip mode) Add green label	Ctrl + 8	Command + 8
(Filmstrip mode) Add blue label	Ctrl + 9	Command + 9
(Filmstrip mode) Add purple label	Ctrl + Shift + 0	Command + Shift + 0
Camera Raw preferences	Ctrl + K	Command + K
Deletes Adobe Camera Raw preferences	Ctrl + Alt (on open)	Option + Shift (on open)

## Use the Black-and-White dialog box

Result	Windows	macOS
Open the Black-and-White dialog box	Shift + Control + Alt + B	Shift + Command + Option + B
Increase/decrease selected value by 1%	Up Arrow/Down Arrow	Up Arrow/Down Arrow
Increase/decrease selected value by 10%	Shift + Up Arrow/Down Arrow	Shift + Up Arrow/Down Arrow
Change the values of the closest color slider	Click-drag on the image	Click-drag on the image





Result	Windows	macOS
Open the Curves dialog box	Control + M	Command + M
Select next point on the curve	+ (plus)	+ (plus)
Select the previous point on the curve	- (minus)	- (minus)
Select multiple points on the curve	Shift-click the points	Shift-click the points
Deselect a point	Control + D	Command + D
To delete a point on the curve	Select a point and press Delete	Select a point and press Delete
Move the selected point 1 unit	Arrow keys	Arrow keys
Move the selected point 10 units	Shift + Arrow keys	Shift + Arrow keys
Display highlights and shadows that will be clipped	Alt-drag black/white point sliders	Option-drag black/white point sliders
Set a point to the composite curve	Control-click the image	Command-click the image
Set a point to the channel curves	Shift + Control-click the image	Shift + Command-click the image
Toggle grid size	Alt-click the field	Option-click the field





This partial list provides shortcuts that don't appear in menu commands or tool tips.

Result	Windows	macOS
Reposition marquee while selecting‡	Any marquee tool (except single column and single row) + spacebar-drag	Any marquee tool (except single column and single row) + spacebar-drag
Add to a selection	Any selection tool + Shift-drag	Any selection tool + Shift-drag
Subtract from a selection	Any selection tool + Alt-drag	Any selection tool + Option-drag
Intersect a selection	Any selection tool (except Quick Selection tool) + Shift-Alt-drag	Any selection tool (except Quick Selection tool) + Shift-Option-drag
Constrain marquee to square or circle (if no other selections are active)‡	Shift-drag	Shift-drag
Draw marquee from center (if no other selections are active)‡	Alt-drag	Option-drag
Constrain shape and draw marquee from center‡	Shift + Alt-drag	Shift + Option-drag
Switch to Move	Control (except	Command (except





	any Pen tool is selected)	Pen tool is selected)
Switch from Magnetic Lasso tool to Lasso tool	Alt-drag	Option-drag
Switch from Magnetic Lasso tool to polygonal Lasso tool	Alt-click	Option-click
Apply/cancel an operation of the Magnetic Lasso	Enter/Esc or Control + . (period)	Return/Esc or Command + . (period)
Move copy of selection	Move tool + Alt-drag selection‡	Move tool + Option-drag selection‡
Move selection area 1 pixel	Any selection + Right Arrow, Left Arrow, Up Arrow, or Down Arrow†	Any selection + Right Arrow, Left Arrow, Up Arrow, or Down Arrow†
Move selection 1 pixel	Move tool + Right Arrow, Left Arrow, Up Arrow, or Down Arrow†‡	Move tool + Right Arrow, Left Arrow, Up Arrow, or Down Arrow†‡
Move layer 1 pixel when nothing selected on layer	Control + Right Arrow, Left Arrow, Up Arrow, or Down Arrow†	Command + Right Arrow, Left Arrow, Up Arrow, or Down Arrow†
Increase/decrease detection width	Magnetic Lasso tool + [ or ]	Magnetic Lasso tool + [ or ]
Accept cropping or exit cropping	Crop tool + Enter or Esc	Crop tool + Return or Esc
Toggle crop shield	/ (forward slash)	/ (forward slash)







Make protractor	Ruler tool + Alt-drag end point	Ruler tool + Option-drag end point
Snap guide to ruler ticks (except when View > Snap is unchecked)	Shift-drag guide	Shift-drag guide
Convert between horizontal and vertical guide	Alt-drag guide	Option-drag guide
†Hold down Shift to move 10 pixels		
‡Applies to shape tools		

# Transform selections, selection borders, and paths

This partial list provides shortcuts that don't appear in menu commands or tool tips.

Result	Windows	macOS
Transform from center or reflect	Alt	Option
Constrain	Shift	Shift
Distort	Control	Command
Apply	Enter	Return
Cancel	Control + . (period) or Esc	Command + . (period) or Esc
Free transform with duplicate data	Control + Alt + T	Command + Option + T





duplicate data

+ Alt + I

+ Option + I

# Edit paths

This partial list provides shortcuts that don't appear in menu commands or tool tips.

Result	Windows	macOS
Select multiple anchor points	Direct selection tool + Shift-click	Direct selection tool + Shift-click
Select entire path	Direct selection tool + Alt-click	Direct selection tool + Option-click
Duplicate a path	Pen (any Pen tool), Path Selection or Direct Selection tool + Control + Alt-drag	Pen (any Pen tool), Path Selection or Direct Selection tool + Command + Option-drag
Switch from Path Selection, Pen, Add Anchor Point, Delete Anchor Point, or Convert Point tools to Direct Selection tool	Control	Command
Switch from Pen tool or Freeform Pen tool to Convert Point tool when pointer is over anchor or direction point	Alt	Option
Close path	Magnetic Pen	Magnetic Pen





Close path with straight-line segment

Magnetic Pen tool + Alt-double-click

Magnetic Pen tool + Option-double-click

## Use for painting

This partial list provides shortcuts that don't appear in menu commands or tool tips.

Result	Windows	macOS
Select foreground color from color picker	Any painting tool + Shift + Alt + right-click and drag	Any painting tool + Control + Option + Command and drag
Select foreground color from image with Eyedropper tool	Any painting tool + Alt or any shape tool + Alt (except when Paths option is selected)	Any painting tool + Option or any shape tool + Option (except when Paths option is selected)
Select background color	Eyedropper tool + Alt-click	Eyedropper tool + Option-click
Color sampler tool	Eyedropper tool + Shift	Eyedropper tool + Shift
Deletes color sampler	Color sampler tool + Alt-click	Color sampler tool + Option-click
Sets opacity, tolerance,	Any painting or editing tool + number keys (e.g., 0 = 100%, 1	Any painting or editing tool + number keys (e.g., 0 = 100%, 1





for painting mode	45%) (when airbrush option is enabled, use Shift + number keys)	45%) (when airbrush option is enabled, use Shift + number keys)
Sets flow for painting mode	Any painting or editing tool + Shift + number keys (e.g., 0 = 100%, 1 = 10%, 4 then 5 in quick succession = 45%) (when airbrush option is enabled, omit Shift)	Any painting or editing tool + Shift + number keys (e.g., 0 = 100%, 1 = 10%, 4 then 5 in quick succession = 45%) (when airbrush option is enabled, omit Shift)
Mixer Brush changes Mix setting	Alt + Shift + number	Option + Shift + number
Mixer Brush changes Wet setting	Number keys	Number keys
Mixer Brush changes Wet and Mix to zero	00	00
Cycle through blending modes	Shift + + (plus) or - (minus)	Shift + + (plus) or - (minus)
Open Fill dialog box on background or standard layer	Backspace <sup>or Shift +</sup> Backspace	Delete <sup>or Shift +</sup> Delete





Foreground or background color	Control + Backspace	Command + Delete
Fill from history	Control + Alt + Backspace <sup>†</sup>	Command + Option + Delete <sup>†</sup>
Displays Fill dialog box	Shift + Backspace	Shift + Delete
Lock transparent pixels on/off	/ (forward slash)	/ (forward slash)
Connects points with a straight line	Any painting tool + Shift-click	Any painting tool + Shift-click
†Hold down Shift to preserve transparency		

## Use for blending modes

Result	Windows	macOS
Cycle through blending modes	Shift + + (plus) or - (minus)	Shift + + (plus) or - (minus)
Normal	Shift + Alt + N	Shift + Option + N
Dissolve	Shift + Alt + I	Shift + Option + I
Behind (Brush tool only)	Shift + Alt + Q	Shift + Option + Q
Clear (Brush tool only)	Shift + Alt +	Shift + Option





Darken	Shift + Alt + K	Shift + Option + K
Multiply	Shift + Alt + M	Shift + Option + M
Color Burn	Shift + Alt + B	Shift + Option + B
Linear Burn	Shift + Alt + A	Shift + Option + A
Lighten	Shift + Alt + G	Shift + Option + G
Screen	Shift + Alt + S	Shift + Option + S
Color Dodge	Shift + Alt + D	Shift + Option + D
Linear Dodge	Shift + Alt + W	Shift + Option + W
Overlay	Shift + Alt + O	Shift + Option + O
Soft Light	Shift + Alt + F	Shift + Option + F
Hard Light	Shift + Alt + H	Shift + Option + H
Vivid Light	Shift + Alt + V	Shift + Option + V
Linear Light	Shift + Alt + J	Shift + Option + J
Pin Light	Shift + Alt + Z	Shift + Option + Z
Hard Mix	Shift + Alt + L	Shift + Option + L





Exclusion	Shift + Alt + X	Shift + Option + X
Hue	Shift + Alt + U	Shift + Option + U
Saturation	Shift + Alt + T	Shift + Option + T
Color	Shift + Alt + C	Shift + Option + C
Luminosity	Shift + Alt + Y	Shift + Option + Y
Desaturate	Sponge tool + Shift + Alt + D	Sponge tool + Shift + Option + D
Saturate	Sponge tool + Shift + Alt + S	Sponge tool + Shift + Option + S
Dodge/burn shadows	Dodge tool/Burn tool + Shift + Alt + S	Dodge tool/Burn tool + Shift + Option + S
Dodge/burn midtones	Dodge tool/Burn tool + Shift + Alt + M	Dodge tool/Burn tool + Shift + Option + M
Dodge/burn highlights	Dodge tool/Burn tool + Shift + Alt + H	Dodge tool/Burn tool + Shift + Option + H
Set blending mode to Threshold for bitmap images, Normal for all other images	Shift + Alt + N	Shift + Option + N





This partial list provides shortcuts that don't appear in menu commands or tool tips.

Result	Windows	macOS
Move type in image	Control-drag type when Type layer is selected	Command-drag type when Type layer is selected
Select 1 character left/right or 1 line down/up, or 1 word left/right	Shift + Left Arrow/Right Arrow or Down Arrow/Up Arrow, or Control + Shift + Left Arrow/Right Arrow	Shift + Left Arrow/Right Arrow or Down Arrow/Up Arrow, or Command + Shift + Left Arrow/Right Arrow
Select characters from insertion point to mouse click point	Shift-click	Shift-click
Move 1 character left/right, 1 line down/up, or 1 word left/right	Left Arrow/Right Arrow, Down Arrow/Up Arrow, or Control + Left Arrow/Right Arrow	Left Arrow/Right Arrow, Down Arrow/Up Arrow, or Command + Left Arrow/Right Arrow
Create a new text layer, when a text layer is selected in the Layers panel	Shift-click	Shift-click
Select a word, line, paragraph, or story	Double-click, triple-click, quadruple-click, or quintuple-click	Double-click, triple-click, quadruple-click, or quintuple-click







Display the bounding box for transforming text when editing text, or activate Move tool if cursor is inside the bounding box	Control	Command
Scale text within a bounding box when resizing the bounding box	Control-drag a bounding box handle	Command-drag a bounding box handle
Move text box while creating text box	Spacebar-drag	Spacebar-drag

## Format type

This partial list provides shortcuts that don't appear in menu commands or tool tips.

Result	Windows	macOS
Align left, center, or right	Horizontal Type tool + Control + Shift + L, C, or R	Horizontal Type tool + Command + Shift + L, C, or R
Align top, center, or bottom	Vertical Type tool + Control + Shift + L, C, or R	Vertical Type tool + Command + Shift + L, C, or R
Choose 100% horizontal scale	Control + Shift + X	Command + Shift + X
Choose 100% vertical scale	Control + Shift + Alt + X	Command + Shift + Option + X
Choose Auto leading	Control + Shift + Alt + A	Command + Shift + Option + A





		Q
Justify paragraph, left aligns last line	Control + Shift + J	Command + Shift + J
Justify paragraph, justifies all	Control + Shift + F	Command + Shift + F
Toggle paragraph hyphenation on/off	Control + Shift + Alt + H	Command + Control + Shift + Option + H
Toggle single/every-line composer on/off	Control + Shift + Alt + T	Command + Shift + Option + T
Decrease or increase type size of selected text 2 points or pixels	Control + Shift + < or > <sup>†</sup>	Command + Shift + < or > <sup>†</sup>
Decrease or increase leading 2 points or pixels	Alt + Down Arrow or Up Arrow <sup>††</sup>	Option + Down Arrow or Up Arrow <sup>††</sup>
Decrease or increase baseline shift 2 points or pixels	Shift + Alt + Down Arrow or Up Arrow <sup>††</sup>	Shift + Option + Down Arrow or Up Arrow <sup>††</sup>
Decrease or increase kerning/tracking 20/1000 ems	Alt + Left Arrow or Right Arrow <sup>††</sup>	Option + Left Arrow or Right Arrow <sup>††</sup>
<p><sup>†</sup>Hold down Alt (Win) or Option (macOS) to decrease/increase by 10</p> <p><sup>††</sup>Hold down Ctrl (Windows) or Command (macOS) to decrease/increase by 10</p>		

## Slice and optimize





Toggle between Slice tool and Slice Selection tool	Control	Command
Draw square slice	Shift-drag	Shift-drag
Draw from center outward	Alt-drag	Option-drag
Draw square slice from center outward	Shift + Alt-drag	Shift + Option-drag
Reposition slice while creating slice	Spacebar-drag	Spacebar-drag
Open context-sensitive menu	Right-click slice	Control-click slice

## Use panels

This partial list provides shortcuts that don't appear in menu commands or tool tips.

Result	Windows	macOS
Set options for new items (except for Actions, Animation, Styles, Brushes, Tool Presets, and Layer Comps panels)	Alt-click New button	Option-click New button
Delete without confirmation (except for the Brush panel)	Alt-click Delete button	Option-click Delete button
Apply value and keep text box active	Shift + Enter	Shift + Return
Show/Hide all panels	Tab	Tab
Show/Hide all panels except the toolbox and options bar	Shift + Tab	Shift + Tab
Highlight options bar	Select tool	Select tool





Increase/decrease selected values by 10

Shift + Up  
Arrow/Down  
Arrow

Shift + Up  
Arrow/Down  
Arrow

## Use the Actions panel

Result	Windows	macOS
Turn command on and all others off, or turn all commands on	Alt-click the check mark next to a command	Option-click the check mark next to a command
Turn current modal control on and toggle all other modal controls	Alt-click	Option-click
Change action or action set options	Alt + double-click action or action set	Option + double-click action or action set
Display Options dialog box for recorded command	Double-click recorded command	Double-click recorded command
Play entire action	Control + double-click an action	Command + double-click an action
Collapse/expand all components of an action	Alt-click the triangle	Option-click the triangle
Play a command	Control-click the Play button	Command-click the Play button
Create new action and begin recording	Alt-click the New Action button	Option-click the New Action





Select contiguous items of the same kind	Shift-click the action/command	Shift-click the action/command
Select discontinuous items of the same kind	Control-click the action/command	Command-click the action/command

## Use adjustment layers

Note: If you prefer channel shortcuts starting with Alt/Option + 1 for red, choose Edit > Keyboard Shortcuts, and select Use Legacy Channel Shortcuts. Then restart Photoshop.

Result	Windows	macOS
Choose specific channel for adjustment	Alt + 3 (red), 4 (green), 5 (blue)	Option + 3 (red), 4 (green), 5 (blue)
Choose composite channel for adjustment	Alt + 2	Option + 2
Delete adjustment layer	Delete or Backspace	Delete
Define Auto options for Levels or Curves	Alt-click Auto button	Option-click Auto button

## Use the Animation panel in Frames mode

Result	Windows	macOS
Select/deselect multiple contiguous frames	Shift-click second frame	Shift-click second frame





discontiguous frames		
Paste using previous settings without displaying the dialog box	Alt + Paste Frames command from the Panel pop-up menu	Option + Paste Frames command from the Panel pop-up menu

## Use the Brush panel

Result	Windows	macOS
Delete brush	Alt-click brush	Option-click brush
Rename brush	Double-click brush	Double-click brush
Change brush size	Alt + right-click + drag left or right	Ctrl + Option + drag left or right
Decrease/increase brush softness/hardness	Alt + right-click + drag up or down	Ctrl + Option + drag up or down
Select previous/next brush size	, (comma) or . (period)	, (comma) or . (period)
Select first/last brush	Shift + , (comma) or . (period)	Shift + , (comma) or . (period)
Display precise cross hair for brushes	Caps Lock or Shift + Caps Lock	Caps Lock
Toggle airbrush option	Shift + Alt + P	Shift + Option + P





Note: If you prefer channel shortcuts starting with Ctrl/Command + 1 for red, choose Edit > Keyboard Shortcuts, and select Use Legacy Channel Shortcuts.

Result	Windows	macOS
Select individual channels	Ctrl + 3 (red), 4 (green), 5 (blue)	Command + 3 (red), 4 (green), 5 (blue)
Select composite channel	Ctrl + 2	Command + 2
Load channel as selection	Control-click channel thumbnail, or Alt + Ctrl + 3 (red), 4 (green), 5 (blue)	Command-click channel thumbnail, or Option + Command + 3 (red), 4 (green), 5 (blue)
Add to current selection	Control + Shift-click channel thumbnail	Command + Shift-click channel thumbnail
Subtract from current selection	Control + Alt-click channel thumbnail	Command + Option-click channel thumbnail
Intersect with current selection	Control + Shift + Alt-click channel thumbnail	Command + Shift + Option-click channel thumbnail
Set options for Save Selection As Channel button	Alt-click Save Selection As Channel button	Option-click Save Selection As Channel button
Create a new spot channel	Control-click Create New Channel button	Command-click Create New Channel button
Select/deselect	Shift-click color	Shift-click color





selection		
Select/deselect alpha channel and show/hide as a rubyolith overlay	Shift-click alpha channel	Shift-click alpha channel
Display channel options	Double-click alpha or spot channel thumbnail	Double-click alpha or spot channel thumbnail
Toggle composite and grayscale mask in Quick Mask mode	~ (tilde)	~ (tilde)

## Use the Clone Source panel

Result	Windows	macOS
Show Clone Source (overlays image)	Alt + Shift	Option + Shift
Nudge Clone Source	Alt + Shift + arrow keys	Option + Shift + arrow keys
Rotate Clone Source	Alt + Shift + < or >	Option + Shift + < or >
Scale (increase or reduce size) Clone Source	Alt + Shift + [ or ]	Option + Shift + [ or ]

## Use the Color panel







Select background color	Alt-click color in color bar	Option-click color in color bar
Display Color Bar menu	Right-click color bar	Control-click color bar
Cycle through color choices	Shift-click color bar	Shift-click color bar

## Use the History panel

Result	Windows	macOS
Create a new snapshot	Alt + New Snapshot	Option + New Snapshot
Rename snapshot	Double-click snapshot name	Double-click snapshot name
Step forward through image states	Control + Shift + Z	Command + Shift + Z
Step backward through image states	Control + Alt + Z	Command + Option + Z
Duplicate any image state, except the current state	Alt-click the image state	Option-click the image state
Permanently clear history (no Undo)	Alt + Clear History (in History panel pop-up menu)	Option + Clear History (in History panel pop-up menu)

## Use the Info panel





Change color readout modes

Click eyedropper icon

Click eyedropper icon

Change measurement units

Click crosshair icon

Click crosshair icon

## Use the Layers panel

Result	Windows	macOS
Load layer transparency as a selection	Control-click layer thumbnail	Command-click layer thumbnail
Add to current selection	Control + Shift-click layer thumbnail	Command + Shift-click layer thumbnail
Subtract from current selection	Control + Alt-click layer thumbnail	Command + Option-click layer thumbnail
Intersect with current selection	Control + Shift + Alt-click layer thumbnail	Command + Shift + Option-click layer thumbnail
Load filter mask as a selection	Control-click filter mask thumbnail	Command-click filter mask thumbnail
New layer	Control + Shift+ N	Command + Shift+ N
New layer via copy	Control + J	Command + J
New layer via cut	Shift + Control + J	Shift + Command + J
Group layers	Control + G	Command + G
Ungroup layers	Control + Shift + G	Command + Shift +





Create/release clipping mask	Control + Alt + G	Command + Option + G
Select all layers	Control + Alt + A	Command + Option + A
Merge visible layers	Control + Shift + E	Command + Shift + E
Create new empty layer with dialog box	Alt-click New Layer button	Option-click New Layer button
Create new layer below target layer	Control-click New Layer button	Command-click New Layer button
Select top layer	Alt + . (period)	Option + . (period)
Select bottom layer	Alt + , (comma)	Option + , (comma)
Add to layer selection in Layers panel	Shift + Alt + [ or ]	Shift + Option + [ or ]
Select next layer down/up	Alt + [ or ]	Option + [ or ]
Move target layer down/up	Control + [ or ]	Command + [ or ]
Merge a copy of all visible layers into target layer	Control + Shift + Alt + E	Command + Shift + Option + E
Merge layers	Highlight layers you want to merge, then Control + E	Highlight the layers you want to merge, then Command + E
Move layer to bottom or top	Control + Shift + [ or ]	Command + Shift + [ or ]





below	the Panel pop-up menu	from the Panel pop-up menu
Merge all visible layers to a new layer above the currently selected layer	Alt + Merge Visible command from the Panel pop-up menu	Option + Merge Visible command from the Panel pop-up menu
Show/hide this layer/layer group only or all layers/layer groups	Right-click the eye icon	Control-click the eye icon
Show/hide all other currently visible layers	Alt-click the eye icon	Option-click the eye icon
Toggle lock transparency for target layer, or last applied lock	/ (forward slash)	/ (forward slash)
Edit layer effect/style, options	Double-click layer effect/style	Double-click layer effect/style
Hide layer effect/style	Alt-double-click layer effect/style	Option-double-click layer effect/style
Edit layer style	Double-click layer	Double-click layer
Disable/enable vector mask	Shift-click vector mask thumbnail	Shift-click vector mask thumbnail
Open Layer Mask Display Options dialog box	Double-click layer mask thumbnail	Double-click layer mask thumbnail
Toggle layer mask on/off	Shift-click layer mask thumbnail	Shift-click layer mask thumbnail





on/off	mask thumbnail	mask thumbnail
Toggle between layer mask/composite image	Alt-click layer mask thumbnail	Option-click layer mask thumbnail
Toggle between filter mask/composite image	Alt-click filter mask thumbnail	Option-click filter mask thumbnail
Toggle rubylith mode for layer mask on/off	\ (backslash), or Shift + Alt-click	\ (backslash), or Shift + Option-click
Select all type; temporarily select Type tool	Double-click type layer thumbnail	Double-click type layer thumbnail
Create a clipping mask	Alt-click the line dividing two layers	Option-click the line dividing two layers
Rename layer	Double-click the layer name	Double-click the layer name
Edit filter settings	Double-click the filter effect	Double-click the filter effect
Edit the Filter Blending options	Double-click the Filter Blending icon	Double-click the Filter Blending icon
Create new layer group below current layer/layer set	Control-click New Group button	Command-click New Group button
Create new layer group with dialog box	Alt-click New Group button	Option-click New Group button
Create layer	Alt-click Add Layer	Option-click Add





Create vector mask that reveals all/path area	Control-click Add Layer Mask button	Command-click Add Layer Mask button
Create vector mask that hides all or displays path area	Control + Alt-click Add Layer Mask button	Command + Option-click Add Layer Mask button
Display layer group properties	Right-click layer group and choose Group Properties, or double-click group	Control-click the layer group and choose Group Properties, or double-click group
Select/deselect multiple contiguous layers	Shift-click	Shift-click
Select/deselect multiple discontinuous layers	Control-click	Command-click

Note: If Kotoeri is your Japanese language input method, the “Toggle ruby mode for layer mask on/off” shortcut starts an action in Kotoeri. Please switch to another mode (for example, “U.S.”) to enable this shortcut.

## Use the Layer Comps panel

Result	Windows	macOS
Create new layer comp without the New Layer Comp box	Alt-click Create New Layer Comp button	Option-click Create New Layer Comp button
Open Layer Comp	Double-click	Double-click layer





Rename in-line	Double-click layer comp name	Double-click layer comp name
Select/deselect multiple contiguous layer comps	Shift-click	Shift-click
Select/deselect multiple discontinuous layer comps	Control-click	Command-click

## Use the Paths panel

Result	Windows	macOS
Load path as selection	Control-click pathname	Command-click pathname
Add path to selection	Control + Shift-click pathname	Command + Shift-click pathname
Subtract path from selection	Control + Alt-click pathname	Command + Option-click pathname
Retain intersection of path as selection	Control + Shift + Alt-click pathname	Command + Shift + Option-click pathname
Hide path	Control + Shift + H	Command + Shift + H
Set options for Fill Path	Alt-click	Option-





Load Path as a Selection button, Make Work Path from Selection button, and Create New Path button

## Use the Swatches panel

Result	Windows	macOS
Create new swatch from foreground color	Click in empty area of panel	Click in empty area of panel
Set swatch color as background color	Control-click swatch	Command-click swatch
Delete swatch	Alt-click swatch	Option-click swatch

## Use Extract and Pattern Maker (optional plug-ins)

Result (Extract and Pattern Maker)	Windows	macOS
Fit in window	Control + 0	Command + 0
Zoom in	Control + + (plus)	Command + + (plus)
Zoom out	Control + - (hyphen)	Command + - (hyphen)
Cycle through controls on right from top	Tab	Tab







Function	Windows	macOS
Cycle through controls on right from bottom	Shift + Tab	Shift + Tab
Temporarily activate Hand tool	Spacebar	Spacebar
Change Cancel to Reset	Alt	Option
<b>Result (Extract only)</b>	<b>Windows</b>	<b>macOS</b>
Edge Highlighter tool	B	B
Fill tool	G	G
Eyedropper tool	I	I
Cleanup tool	C	C
Edge Touchup tool	T	T
Toggle between Edge Highlighter tool and Eraser tool	Alt + Edge Highlighter/Eraser tool	Option + Edge Highlighter/Eraser tool
Toggle Smart Highlighting	Control with Edge Highlighter tool selected	Command with Edge Highlighter tool selected
Remove current highlight	Alt + Delete	Option + Delete
Highlight entire image	Control + Delete	Command + Delete
Fill foreground area and preview extraction	Shift-click with Fill tool selected	Shift-click with Fill tool selected





Function	Mac	Windows
Move mask when Edge Touchup tool is selected	Control-drag	Command-drag
Add opacity when Cleanup tool is selected	Alt-drag	Option-drag
Toggle Show menu options in preview between Original and Extracted	X	X
Enable Cleanup and Edge Touchup tools before preview	Shift + X	Shift + X
Cycle through Display menu in preview from top to bottom	F	F
Cycle through Display menu in preview from bottom to top	Shift + F	Shift + F
Decrease/increase brush size by 1	Down Arrow/Up Arrow in Brush Size text box <sup>†</sup>	Down Arrow or Up Arrow in Brush Size text box <sup>†</sup>
Decrease/increase brush size by 1	Left Arrow/Right Arrow with Brush Size Slider showing <sup>†</sup>	Left Arrow/Right Arrow with Brush Size Slider showing <sup>†</sup>
Set strength of Cleanup or Edge Touch-up tool	0-9	0-9



**Pattern Maker**

†Hold down Shift to decrease/increase by 10

<b>Result (Pattern Maker only)</b>	<b>Windows</b>	<b>macOS</b>
Delete current selection	Control + D	Command + D
Undo a selection move	Control + Z	Command + Z
Generate or generate again	Control + G	Command + G
Intersect with current selection	Shift + Alt + select	Shift + Option + select
Toggle view: original/generated pattern	X	X
Go to first tile in Tile History	Home	Home
Go to last tile in Tile History	End	End
Go to previous tile in Tile History	Left Arrow, Page Up	Left Arrow, Page Up
Go to next tile in Tile History	Right Arrow, Page Down	Right Arrow, Page Down
Delete current tile from Tile History	Delete	Delete
Nudge selection when viewing the original	Right Arrow, Left Arrow, Up Arrow, or Down Arrow	Right Arrow, Left Arrow, Up Arrow, or Down Arrow





Increase selection nudging when viewing the original	Shift + Right Arrow, Left Arrow, Up Arrow, or Down Arrow	Shift + Right Arrow, Left Arrow, Up Arrow, or Down Arrow
--	--	--

Related Post: [Autodesk Maya Keyboard Shortcuts](#)

Share this:



### Related



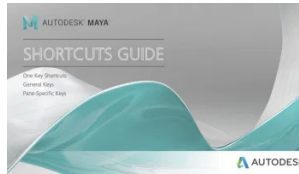
[Adobe After Effects Keyboard Shortcuts](#)

April 2, 2018  
In "Tutorial"



[ZBrush Keyboard Shortcuts](#)

April 20, 2018  
In "Tutorial"



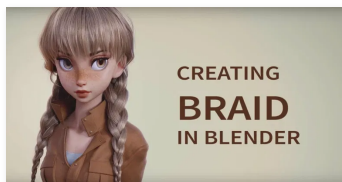
[Autodesk Maya Keyboard Shortcuts](#)

March 24, 2018  
In "Tutorial"

[← Autodesk Maya Keyboard Shortcuts](#)

[axisVFX delivered 1350 shots for Aardman's Early Man →](#)

### You May Also Like





HOME

NEWS ▾

VFX BREAKDOWN

AB STUDIOS

JOB'S ▾

CHAT

ABOUT US

CONT

### Shortcuts

📅 April 11, 2018 💬 0

📅 February 11, 2018 💬 0

📅 April 20, 2018 💬 0

Copyright © 2020 [Animation Boss](#). All rights reserved.  
Theme: ColorMag by [ThemeGrill](#). Powered by [WordPress](#).

